

# PUSH TO CONNECT

## INSTRUCTION SHEET

FSBBV312 - 1/2"

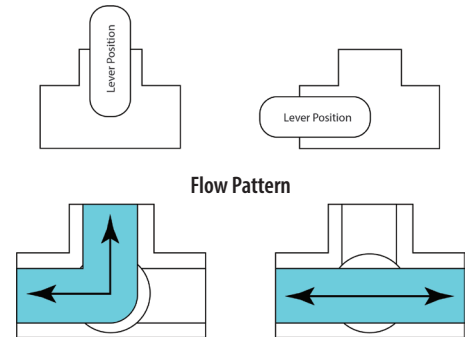
FSBBV334 - 3/4"

# Push-To-Connect Tectite by Apollo Three Way Ball Valves

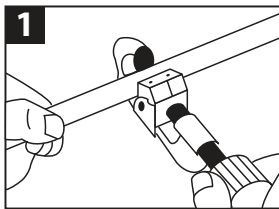


The Tectite by Apollo Push-To-Connect 3-Way Ball Valve is unique in that it can function as a diverter valve or mixing valve. It is the fastest, cleanest and simplest way to install or replace a 3-way ball valve on copper, CPVC, PE-RT and PEX piping systems without the use of tools, solder, open flame or glue. The quarter turn, single lever control allows for simple control of water flow in hydronic and potable water systems.

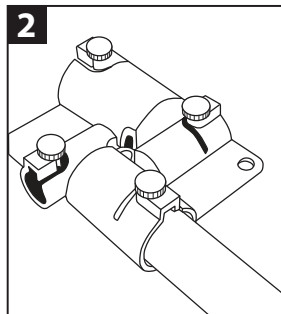
- Unique 3-way valve acts as a diverter or mixing valve.
- Quarter-turn handle design for simple flow control.
- Constructed of lead free dezincification resistant (DZR) brass for superior reliability and strength.
- Ideal for potable water and hydronic heating applications.
- Demount clip allows for valve removal. (Sold separately)
- Approved for behind-the-wall with no access and burial.
- Corrosion resistant for greater longevity.
- Maximum working pressure of 200 psi and maximum temperature of 250°F.



## Push Installation

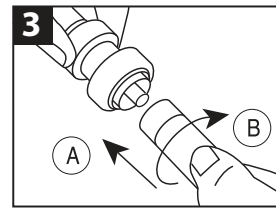


**1** Cut pipe.



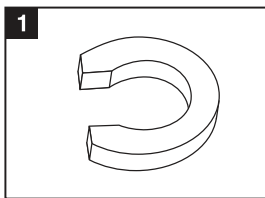
**2** Mark insertion depth using the depth gauge (sold separately).

See table below for insertion depths.

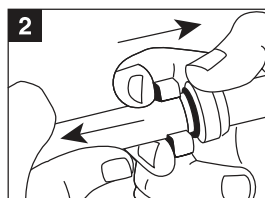


**3** Push pipe (A) and twist (B) into fitting until fitting edge meets depth line.

## Push Removal



**1** Removal tool (sold separately).



**2** Place tool around pipe next to fitting. Press tool toward fitting while pulling pipe from fitting.

After assembly, fittings may be rotated for simpler installation in tight spaces.

Fittings can be used with Copper, CPVC, PE-RT, or PEX pipe. They are removeable and reusable. Install Tectite by Apollo fittings wet or dry. Tube liners (included) are required to join PEX tubing.

### Pipe Depth for Tectite Fittings

Fitting/Pipe Size	Insertion Depth
1"	1-5/16"
3/4"	1-1/8"
1/2"	15/16"
3/8"	15/16"

# TECTITE

by APOLLO

is-Tectite\_01/20/21

The Mosack Group, Inc.  
Mint Hill, NC 28227  
1.888.229.2874  
[www.apolloflow.com](http://www.apolloflow.com)