

Push-To-Connect Washing Machine Outlet Box

Installation Instructions:

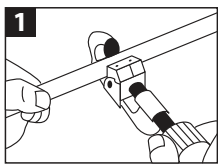
1. Turn off and fully drain water supply to involved piping.
2. Attach brackets to the studs making sure the outlet box can attach to the brackets on both sides.
3. Connect the cold water line to the Tectite by Apollo Push-To-Connect valve with the blue handle. Connect the hot water line to the Tectite by Apollo Push-To-Connect valve with the red handle.
4. Secure water lines into place to prevent movement.
5. After sheet rock is installed and painted, press faceplate into place.
6. Attach the supply lines to the valves and attach to the washing machine.
7. Turn on water supply. Check valves and hoses for leaks.

To Change Valve Configuration:

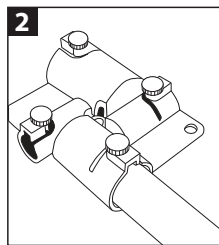
Tools Required: 8mm hex key & crescent wrench

1. Using a crescent wrench, hold the valve body in place at the base of the inside of the appliance box.
2. Insert an 8mm hex key into the Tectite by Apollo push-to-connect fitting until it seats properly and turn counter-clockwise completely removing the fitting from the valve body.
3. Remove the slim retaining nut which will allow for the removal of the valve body.
4. Turning the box 180° so the top becomes the bottom will reveal knockouts for a side oriented drain and the appropriate valve placement locations.
5. Insert the valves, tighten the retaining nut and push fittings back into place. The integrated o-ring design eliminates the need for the use of thread tape or sealant.

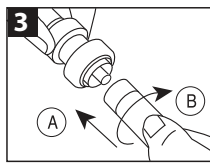
Push Installation



Cut pipe.

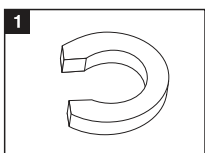


Mark insertion depth using the depth gauge (sold separately).

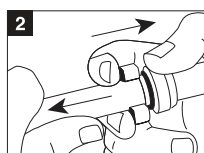


Push pipe (A) and twist (B) into fitting until fitting edge meets depth line.

Push Removal



Removal tool (sold separately).



Place tool around pipe next to fitting. Press tool toward fitting while pulling pipe from fitting.

Pipe Depth for Tectite Fittings

<i>Fitting/Pipe Size</i>	<i>Insertion Depth</i>
1"	1-5/16"
3/4"	1-1/8"
1/2"	15/16"
3/8"	15/16"